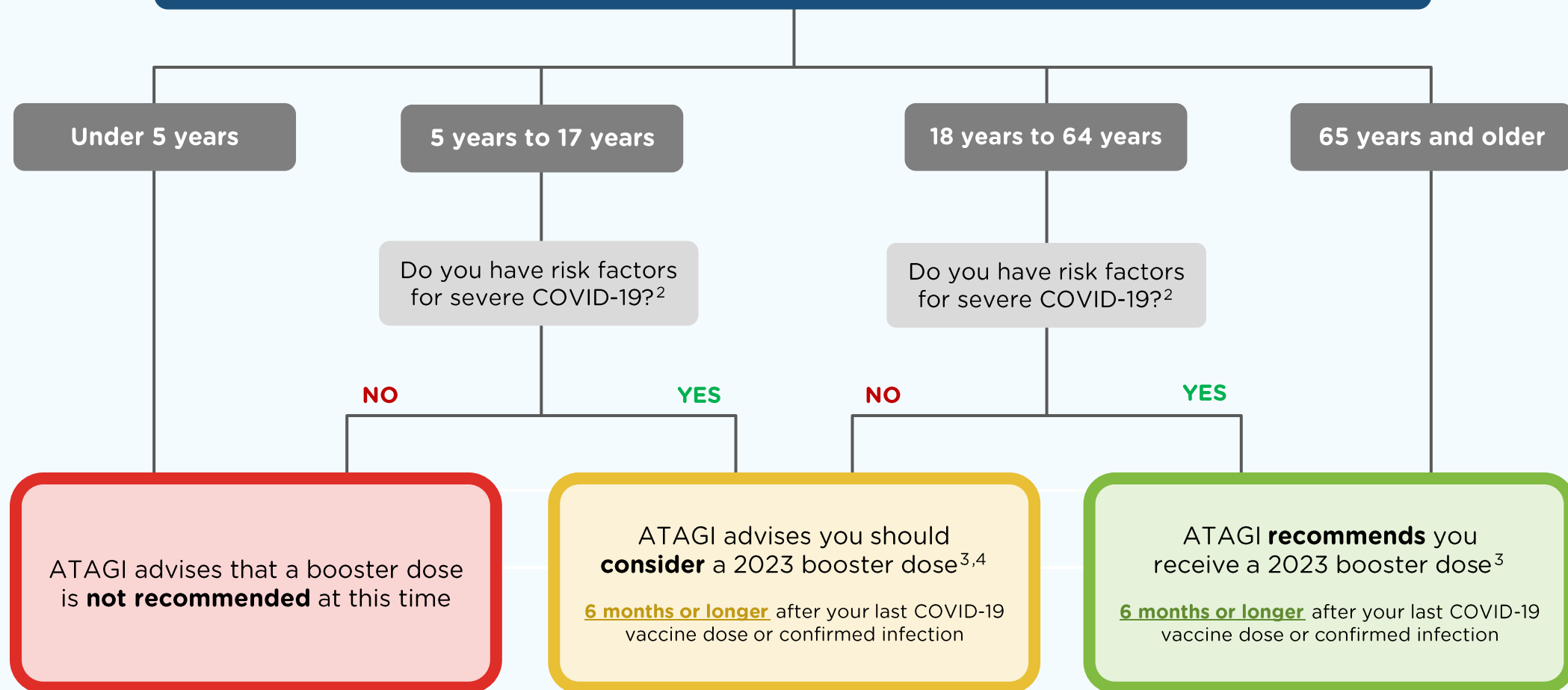


ATAGI 2023 booster advice

For people who have completed a primary course¹



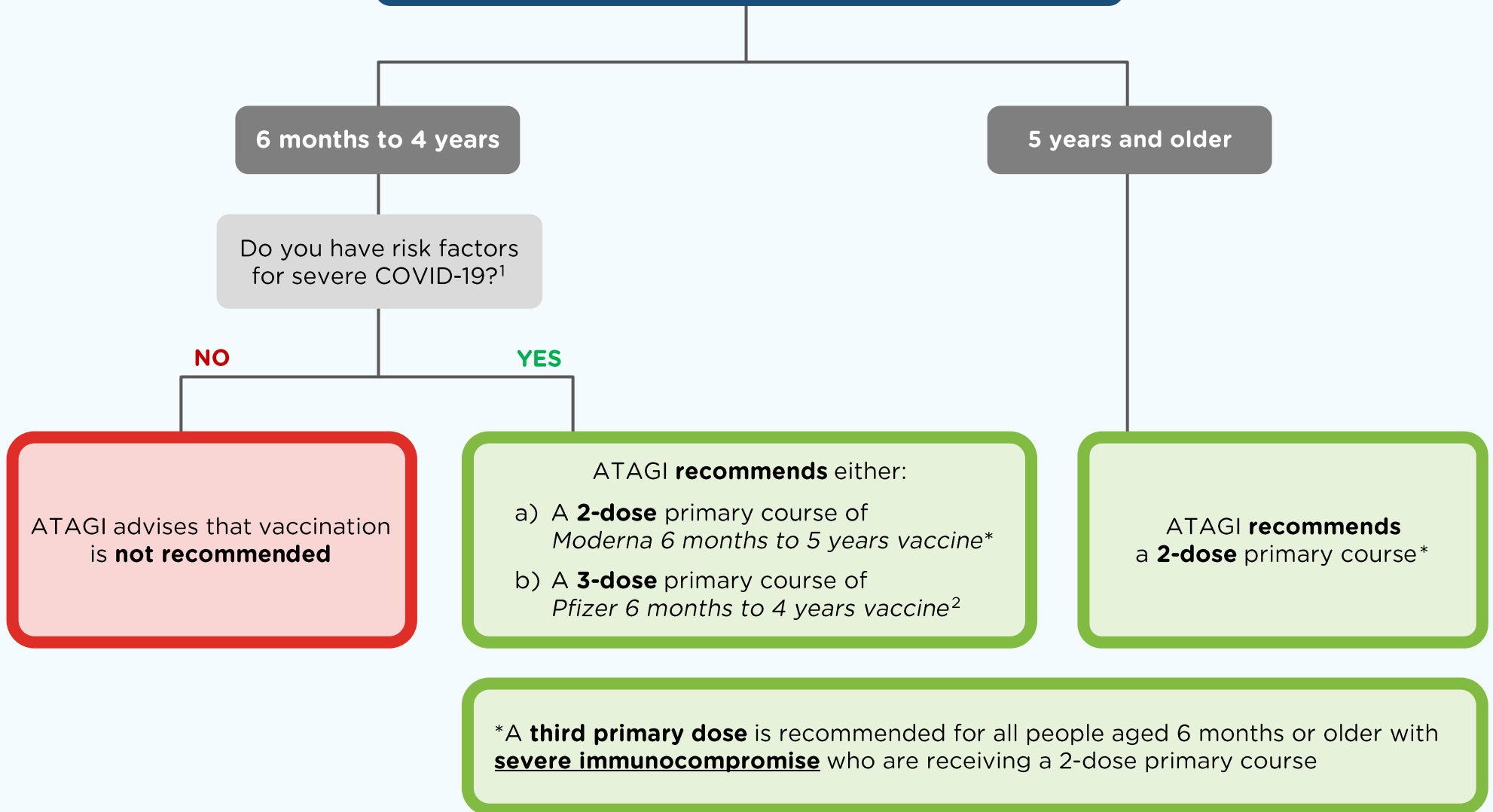
Notes

1. For most people, a primary vaccination course consists of 2 doses. A third primary dose is recommended for people aged 6 months or older with severe immunocompromise. See [considerations for special populations: people who are immunocompromised](#).
2. Includes those with a medical condition that increases the risk of severe COVID-19 illness (refer to [ATAGI clinical guidance](#)) or those with disability with significant or complex health needs or multiple comorbidities which increase the risk of poor outcomes from COVID-19.
3. mRNA bivalent booster preferred; for ages in which a bivalent vaccine is not approved, [use a vaccine approved for that age group](#).
4. Consider a 2023 booster dose based on an individual risk benefit assessment with their immunisation provider.

Information current as of 16 March 2023



ATAGI primary course advice



*A **third primary dose** is recommended for all people aged 6 months or older with **severe immunocompromise** who are receiving a 2-dose primary course

Notes

1. Includes those with severe immunocompromise, disability, and those who have complex and/or multiple health conditions that increase the risk of severe COVID-19.
2. Severely immunocompromised children who receive the 3-dose primary schedule of the Pfizer (COMIRNATY) 6 months to 4 years (maroon cap) vaccine do not require a fourth primary dose.

Information current as of 16 March 2023